

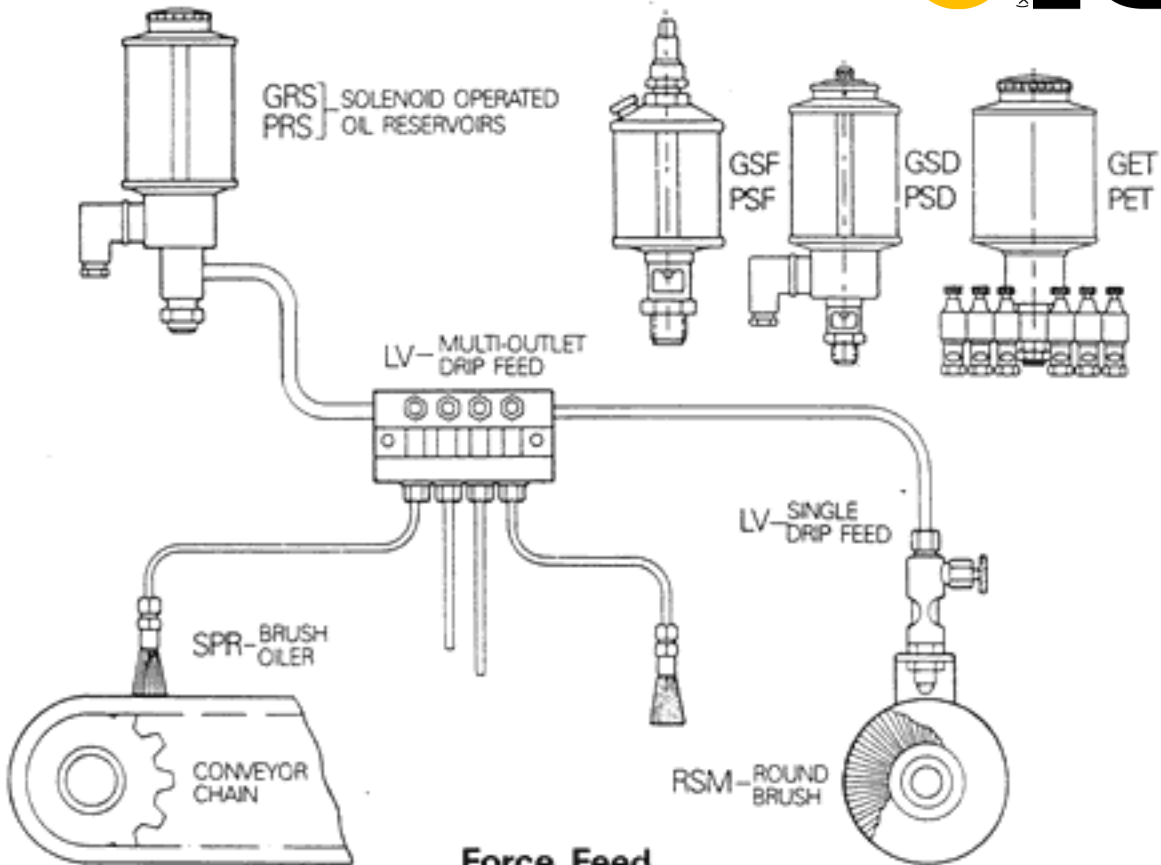
# TYPICAL FEED SYSTEM



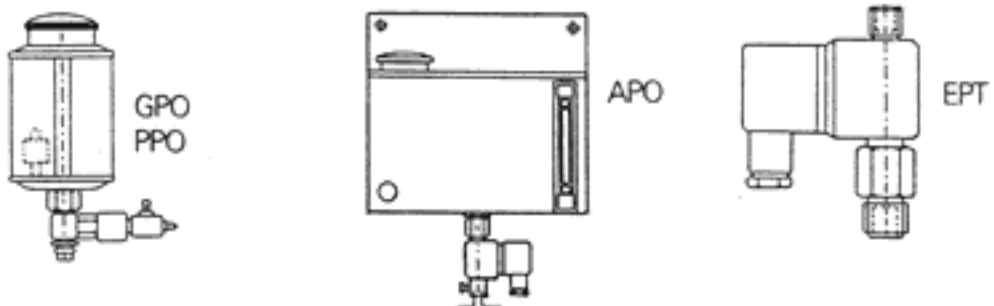
INDUSTRIAL LUBRICANTS UK



## Gravity Feed



## Force Feed



# Solenoid Operated Multi-Outlet - 2 Outlets



## Glass and Plexiglass Bottle

These multiple drip feed lubricators are available with a range of 2 to 24 distribution outlets. This permits the make up of simple and cost effective centralized lubrication systems

| PRODUCT CODE Glass | PRODUCT CODE Plexi | A       | B mm | C mm | D mm | Capacity ml | Available with Low Level Switch |
|--------------------|--------------------|---------|------|------|------|-------------|---------------------------------|
| GET 160            | PET 160            | 1/8 BSP | 175  | 60   | 60   | 140         |                                 |
| GETN 160           | PETN 160           | 1/8 NPT | 175  | 60   | 60   | 140         |                                 |
| GET 168            | PET 168            | 1/8 BSP | 195  | 80   | 60   | 200         |                                 |
| GETN 168           | PETN 168           | 1/8 NPT | 195  | 80   | 60   | 200         |                                 |
| GET 180            | PET 180            | 1/8 BSP | 235  | 100  | 80   | 400         |                                 |
| GETN 180           | PETN 180           | 1/8 NPT | 235  | 100  | 80   | 400         |                                 |
| GET 1100           | PET 1100           | 1/8 BSP | 275  | 120  | 100  | 900         | X                               |
| GETN 1100          | PETN 1100          | 1/8 NPT | 275  | 120  | 100  | 900         | X                               |
| GET 1133           | PET 1133           | 1/8 BSP | 320  | 150  | 133  | 1900        | X                               |
| GETN 1133          | PETN 1133          | 1/8 NPT | 320  | 150  | 133  | 1900        | X                               |
| GET 1150           | PET 1150           | 1/8 BSP | 350  | 180  | 150  | 3000        | X                               |
| GETN 1150          | PETN 1150          | 1/8 NPT | 350  | 180  | 150  | 3000        | X                               |

Voltages available: 12V DC, 24V DC, 24V AC, 110V 50Hz, 230V 50Hz, 415V 50Hz

On those products where a low level switch option is available, please add suffix 'FS' to the product code.

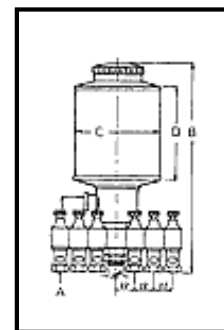
When ordering, please state quantity if more than 2 distribution outlets are required.

Material - BRASS Finish - NICKEL / BRASS Seals - FIBRE & NITRILE 80

Maximum operating Temperature for glass = 80 Deg C

Maximum operating Temperature for plexiglass = 70 Deg C

LVT 10780 and LVT 10781 timers for GET and PET



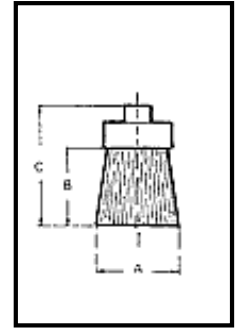
# Brushes

## Round - 1/8" BSP

| PRODUCT CODE | A   | B  | C  | BODY  |
|--------------|-----|----|----|-------|
| SPR 6.5      | 6.5 | 50 | 65 | Brass |
| SPR 16       | 16  | 30 | 53 | Brass |
| SPR 25       | 25  | 45 | 70 | Brass |
| SPR 30       | 30  | 45 | 70 | Brass |

Add suffix 'N' if nylon brush is required e.g. SPRN 25

Add suffix 'B' if steel brush is required e.g. SPRB 16



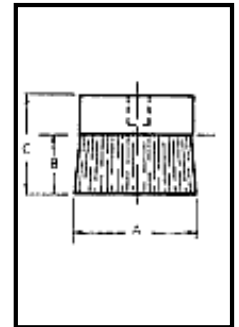
## Flat - 1/8" BSP

| PRODUCT CODE | A  | B  | C  | BODY      |
|--------------|----|----|----|-----------|
| SPF 57       | 57 | 30 | 50 | Aluminium |

Add suffix 'N' if nylon brush is required e.g. SPFN 25

Add suffix 'B' if steel brush is required e.g. SPFB 16

Spare Brush unit - Part No. SPF 57/1



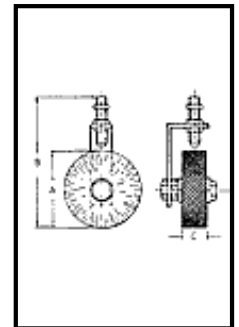
## Circular - 1/8" BSP

| PRODUCT CODE | A  | B   | C  | BODY          |
|--------------|----|-----|----|---------------|
| RSM 80       | 80 | 137 | 25 | Steel Bracket |

Add suffix 'N' if nylon brush is required e.g. RSMN 25

Add suffix 'B' if steel brush is required e.g. RSMB 16

Spare Brush unit - Part No. RSM 80/1

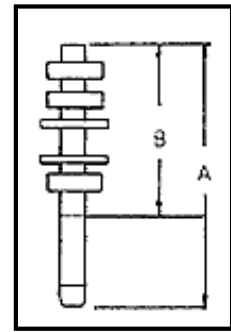


## Brush Holder - Adjustable



| PRODUCT CODE | A   | B  | THREAD  |
|--------------|-----|----|---------|
| PHA 60       | 60  | 47 | 1/8 BSP |
| PHA 80       | 80  | 47 | 1/8 BSP |
| PHA 120      | 120 | 47 | 1/8 BSP |

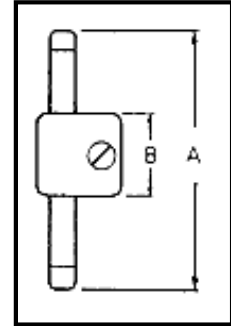
Material - STEEL    Finish - ZINC PLATE



### Brush Holder - For use with mounting rail - Swivel

| PRODUCT CODE | A   | B  | THREAD  |
|--------------|-----|----|---------|
| PHB 60       | 60  | 30 | 1/8 BSP |
| PHB 80       | 80  | 30 | 1/8 BSP |
| PHB 120      | 120 | 30 | 1/8 BSP |

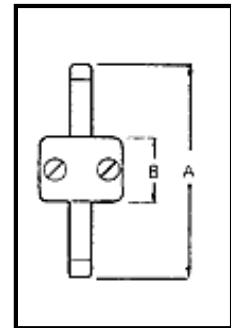
Material - STEEL    Finish - ZINC PLATE



### Brush Holder - For use with mounting rail - Fixed

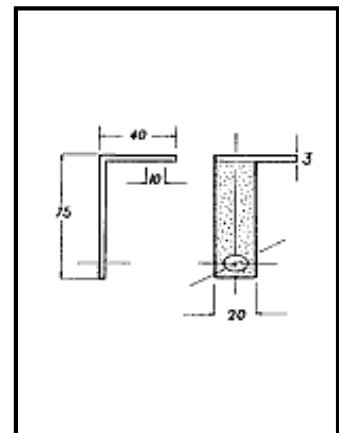
| PRODUCT CODE | A   | B  | THREAD  |
|--------------|-----|----|---------|
| PHC 60       | 60  | 30 | 1/8 BSP |
| PHC 80       | 80  | 30 | 1/8 BSP |
| PHC 120      | 120 | 30 | 1/8 BSP |

Material - STEEL    Finish - ZINC PLATE



### RSMB Angle Bracket for use with PHA

Material - STEEL    Finish - ZINC PLATE



## TS11 Mounting Rail for use with PHB and PHC

Material - STEEL

